

Tel: 01932 351986
 Email: info@greenandparry.com



Joinville Place, Addlestone, KT15 2HP

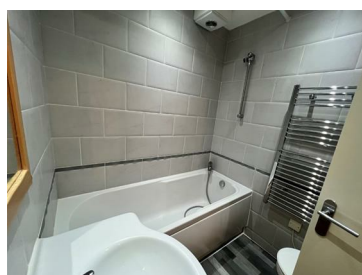
£1,150 Per Month



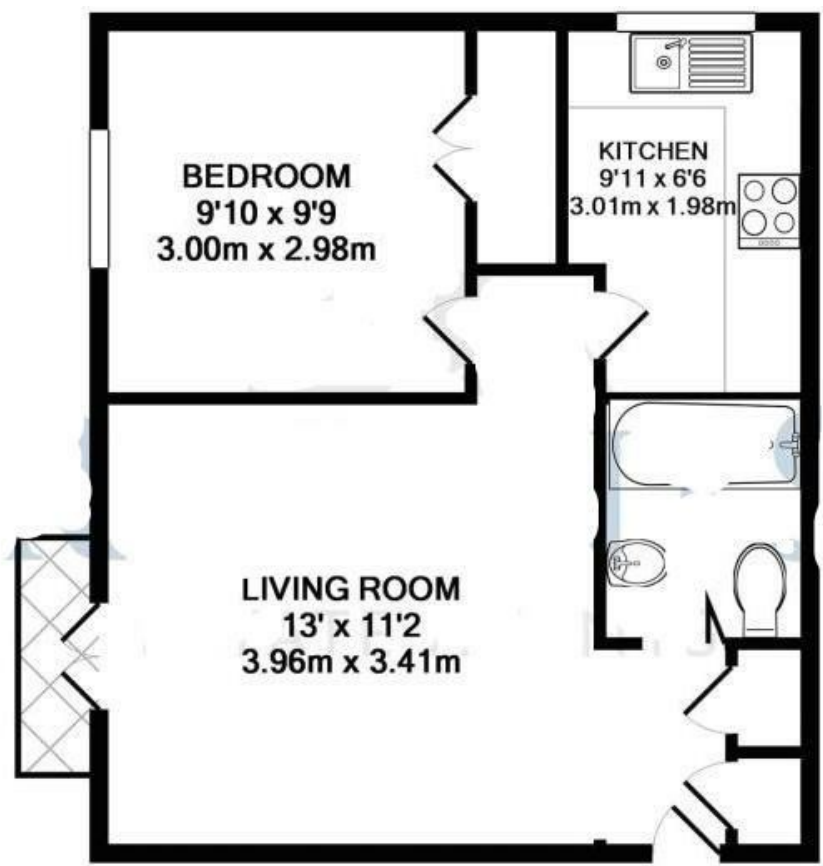
A one bedroom ground floor apartment. Situated a short stroll to the town centre in a quiet cul de sac, the property features a good size living room with French doors, kitchen, double bedroom and bathroom. Further benefits to the property include double glazing, secure door entry system, residents parking. The property is ideally situated for Addlestone Town Centre and amenities including the Train Station and well known supermarkets. Excellent motorway networks.

*Residents parking

*Located in the heart of Addlestone



Floor Plan



Made with Metropix ©2017

Energy Efficiency Rating		
	Current	Potential
Very energy efficient - lower running costs		
(92 plus) A		
(81-91) B		
(69-80) C		
(55-68) D		
(39-54) E		
(21-38) F		
(1-20) G		
Not energy efficient - higher running costs		
England & Wales	EU Directive 2002/91/EC	

These particulars, whilst believed to be accurate are set out as a general outline only for guidance and do not constitute any part of an offer or contract. Intending purchasers should not rely on them as statements of representation of fact, but must satisfy themselves by inspection or otherwise as to their accuracy. No person in this firms employment has the authority to make or give any representation or warranty in respect of the property.